



PANFISH / NON-GAME

FALL PANFISH/NONGAME ELECTROFISHING DATA COLLECTION SHEET (3600-190-PNG/E/B/FALL)

Wisconsin Department of Natural Resources

Waterbody Name: 5th  
 MWB Code/WBIC: 1571100  
 Waterbody Type: Lake  
 County: Clark  
 Date (MM/DD/YY): 5-3-16  
 Station: \_\_\_\_\_  
 Start Time: 1136  
 End Time: 1218  
 Collectors: Timber  
Kubisaik

Target Fish: Panfish  
 Mark(s) Given: none  
 Survey Type: CPE (Fall Shoreline) - Panfish  
 Gear Type: Boomshocker Tynet  
 Weather: overcast Rain  
 Adverse Conditions: none  
 Water Temperature: 53  
 Water Conductivity: \_\_\_\_\_  
 Water Level: [HI] [NORM] [LOW]  
 Water Clarity: 10  
 Substrate Type: \_\_\_\_\_

Generator Start Time: \_\_\_\_\_  
 Generator End Time: \_\_\_\_\_  
 Volts: \_\_\_\_\_  
 Amps: \_\_\_\_\_  
 Pulse Rate: \_\_\_\_\_  
 Duty Cycle: \_\_\_\_\_  
 Current Type: [AC] [DC] [PDC]  
 Distance Shocked: \_\_\_\_\_  
 Entire Shoreline Shocked: [Y] [N] [I]  
 Number of Dippers: [1] [2]  
 Dipnet Mesh Size: \_\_\_\_\_

Blacker #1					Yellow #1					Bladder #2					Yellow #2				
SPECIES					SPECIES					SPECIES					SPECIES				
INCHES					INCHES					INCHES					INCHES				
0.0-0.4					0.0-0.4					0.0-0.4					0.0-0.4				
0.5-0.9					0.5-0.9					0.5-0.9					0.5-0.9				
1.0-1.4					1.0-1.4					1.0-1.4					1.0-1.4				
1.5-1.9					1.5-1.9					1.5-1.9					1.5-1.9				
2.0-2.4					2.0-2.4					2.0-2.4					2.0-2.4				
2.5-2.9					2.5-2.9					2.5-2.9					2.5-2.9				
3.0-3.4					3.0-3.4					3.0-3.4					3.0-3.4				
3.5-3.9					3.5-3.9					3.5-3.9					3.5-3.9				
4.0-4.4					4.0-4.4					4.0-4.4					4.0-4.4				
4.5-4.9					4.5-4.9					4.5-4.9					4.5-4.9				
5.0-5.4					5.0-5.4					5.0-5.4					5.0-5.4				
5.5-5.9					5.5-5.9					5.5-5.9					5.5-5.9				
6.0-6.4					6.0-6.4					6.0-6.4					6.0-6.4				
6.5-6.9					6.5-6.9					6.5-6.9					6.5-6.9				
7.0-7.4					7.0-7.4					7.0-7.4					7.0-7.4				
7.5-7.9					7.5-7.9					7.5-7.9					7.5-7.9				
8.0-8.4					8.0-8.4					8.0-8.4					8.0-8.4				
8.5-8.9					8.5-8.9					8.5-8.9					8.5-8.9				
9.0-9.4					9.0-9.4					9.0-9.4					9.0-9.4				
9.5-9.9					9.5-9.9					9.5-9.9					9.5-9.9				
10.0-10.4					10.0-10.4					10.0-10.4					10.0-10.4				
10.5-10.9					10.5-10.9					10.5-10.9					10.5-10.9				
11.0-11.4					11.0-11.4					11.0-11.4					11.0-11.4				
11.5-11.9					11.5-11.9					11.5-11.9					11.5-11.9				
12.0-12.4					12.0-12.4					12.0-12.4					12.0-12.4				
12.5-12.9					12.5-12.9					12.5-12.9					12.5-12.9				
13.0-13.4					13.0-13.4					13.0-13.4					13.0-13.4				
13.5-13.9					13.5-13.9					13.5-13.9					13.5-13.9				
14.0-14.4					14.0-14.4					14.0-14.4					14.0-14.4				
14.5-14.9					14.5-14.9					14.5-14.9					14.5-14.9				
15.0-15.4					15.0-15.4					15.0-15.4					15.0-15.4				
15.5-15.9					15.5-15.9					15.5-15.9					15.5-15.9				
16.0-16.4					16.0-16.4					16.0-16.4					16.0-16.4				
16.5-16.9					16.5-16.9					16.5-16.9					16.5-16.9				
17.0-17.4					17.0-17.4					17.0-17.4					17.0-17.4				
17.5-17.9					17.5-17.9					17.5-17.9					17.5-17.9				
18.0-18.4					18.0-18.4					18.0-18.4					18.0-18.4				
18.5-18.9					18.5-18.9					18.5-18.9					18.5-18.9				
19.0-19.4					19.0-19.4					19.0-19.4					19.0-19.4				
19.5-19.9					19.5-19.9					19.5-19.9					19.5-19.9				
TOTALS:					TOTALS:					TOTALS:					TOTALS:				
COUNTS:					COUNTS:					COUNTS:					COUNTS:				

10/10

MUSKY NETTING DATA COLLECTION SHEET (3600-186-M/N/LE)

Waterbody Name: 4th + 5th  
 MWB Code/WBIC: 1572000 / 1571100  
 Waterbody Type: 1A10  
 County: Oneida  
 Date (MM/DD/YY): 5-3-16  
 Station:  
 Start Time: 1042 / 1130  
 End Time: 1120 / 1218  
 Collectors: Timon / Kubsnik

Target Fish: Pontfish  
 Mark Given: none  
 Survey Type: Population Estimate  
 Gear Type: Fyke Net  
 Weather: Overcast Rain, humid  
 Adverse Conditions: none  
 Water Temperature: 53  
 Water Level: normal  
 Water Clarity: 1.0

Number of Nets: 2 / 2  
 Number of Nights: 2 / 2  
 Net Frame Height: 4 / 2  
 Net Frame Width: 6  
 Lead Length: 25  
 Largest Bar Mesh Size: 3/4  
 Smallest Bar Mesh Size: 3/4  
 Mesh Color: white  
 Mesh Material: nylon

#	Net #	PIT-tag #	Sex	Green, Running, Spent	Length (0.1")	Weight (0.1 lb)	Pectoral Girth	Maximum Girth	Mark Observed	Comments (indicate if PIT is a recapture)
1	1	989 0010 0429 4963	M	—	33.6	8.6	11.2	12.9	None	new 4th Lake
2	2	989 0010 0429 4963	V	spent Fendo	40.8	12.7	13.5	13.9	None	spent Fendo new: 4th
3	2	989 0010 0429 4985	M	—	28.0	5.0	9.3	10.6	None	new 4th
4	2	989 0010 0429 0301	M	—	33.3	8.1	11.3	12.6	None	new 4th
5										
6										
7										
8										
9										
10	1	989 0010 0429 0231	M	—	34.7	8.2	11.1	12.5	None	new old RV 5th Lake
11	2	0286	M	—	34.9	8.9	11.7	13.0	new	new 5th Lake
12										
13										
14										
15										
16										
17										
18										
19										
20										

12.5  
3.6  
9.5 9.4  
8.4 3.6

16.3  
3.6  
13.

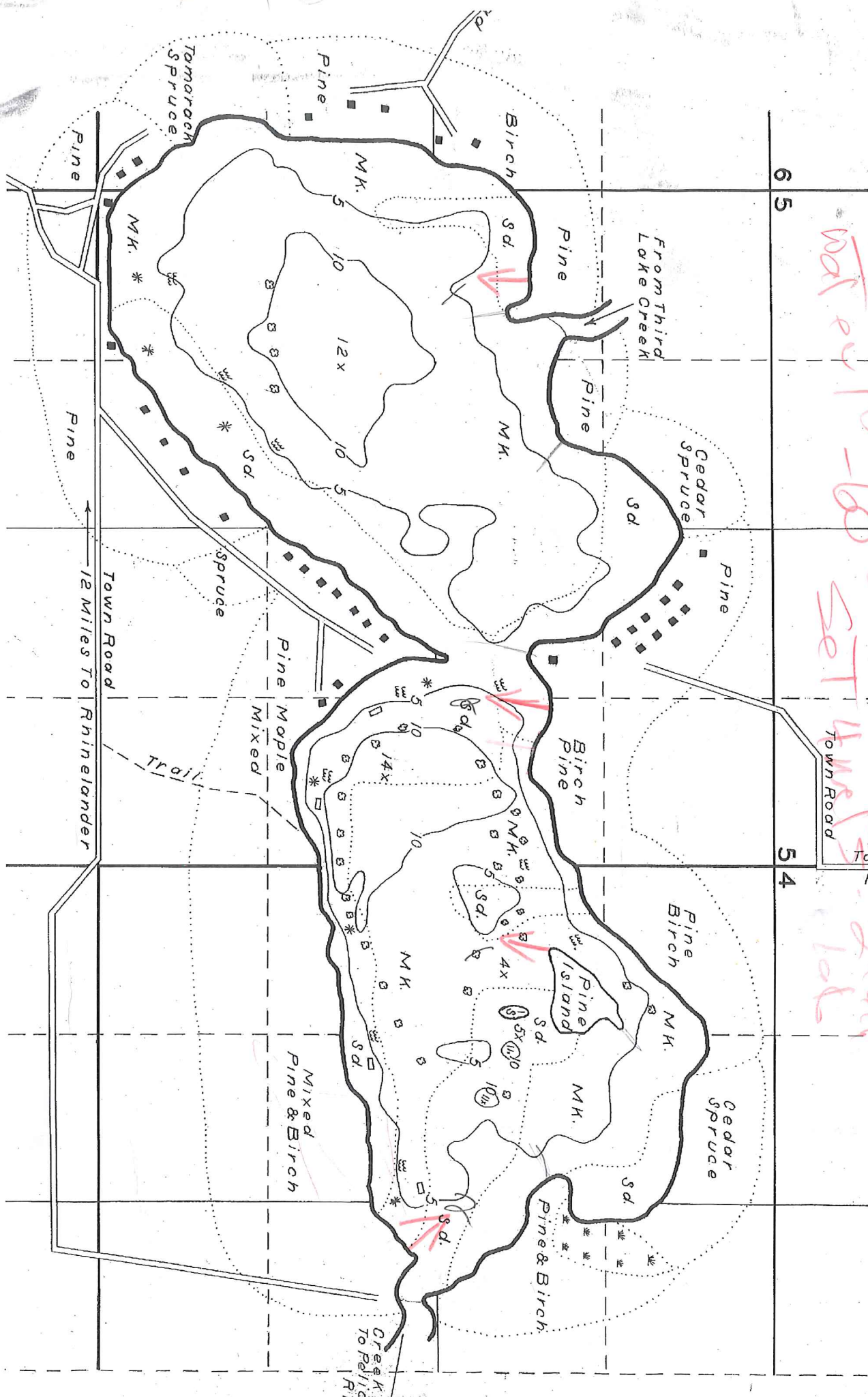
12.

8.3.6

11.7  
3.6  
8.1

11.8  
3.6

4



Tulov - Kubisak  
 MAT 270-105-2-16  
 SET 4ms  
 2 feet  
 1st